



AI AND SOCIETY

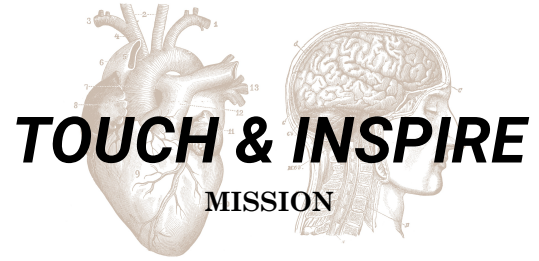
Dr. Andreas Stiegler

FOUNDED
1996

owner-managed

> **135**

COLLEAGUES



THE FUTURE BELONGS TO THE BRAVE.

- Berlin
- Stuttgart
- Shanghai
- Hamburg

811

Awards in total (more than hundred red dots)

#1

Creativity Ranking
CI/CD

#2

Turnover Ranking
CI/CD



deli
得力办公

① Alexander Bürkle



DEUTSCHER
FUSSBALL-BUND

BUCHERER
1888



PORSCHE

otto group



AUTOSTADT

adidas
GROUP

TRUMPF



 **Bloxxter**



VORWERK

OSRAM

METRO GROUP



WELTMEISTER
威马汽车

 **progroup**

Frankfurter Allgemeine





Artificial Intelligence



THE MANY FACES OF AI

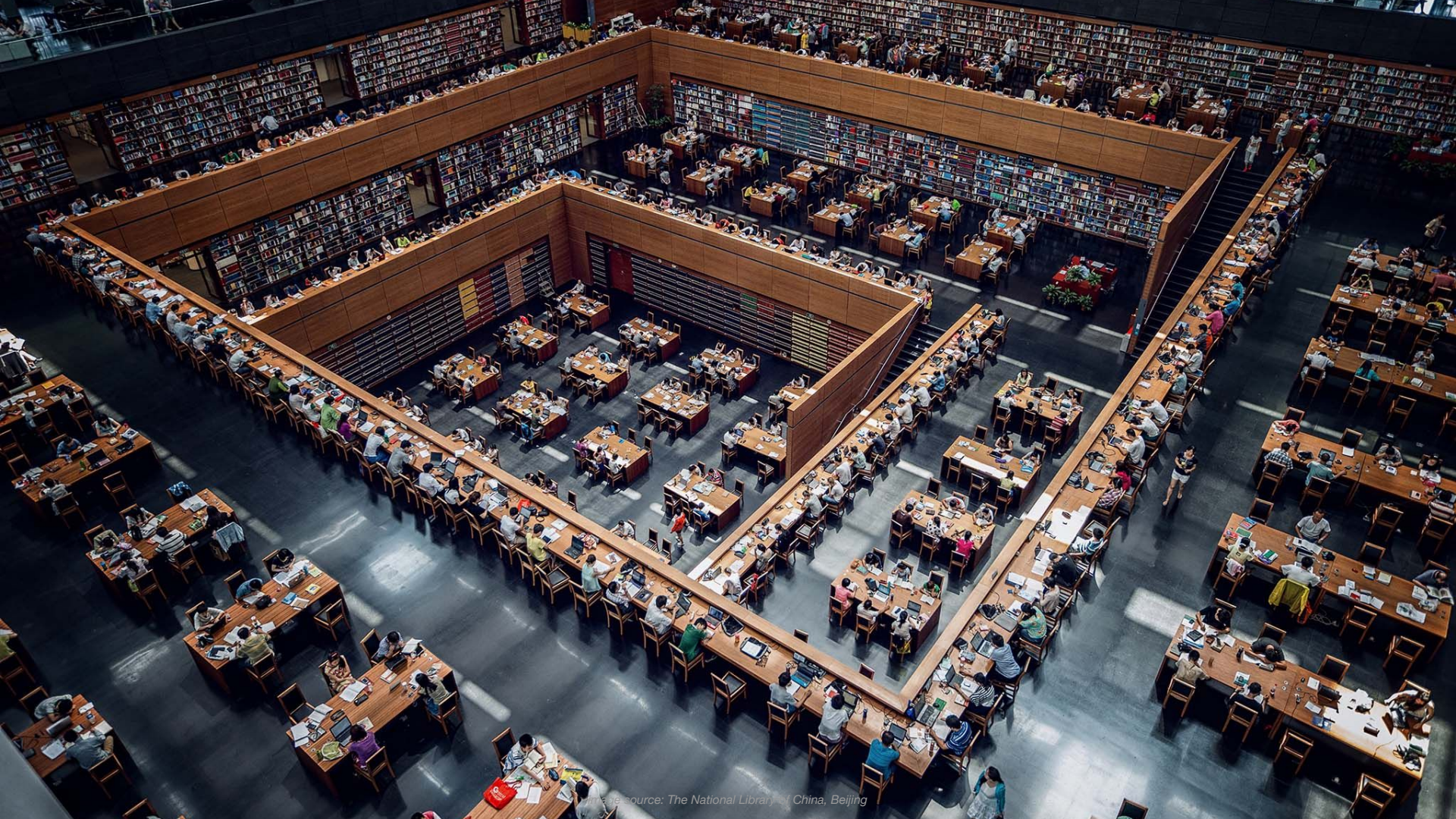


Image source: The National Library of China, Beijing



Machine Learning

Image source: The National Library of China, Beijing

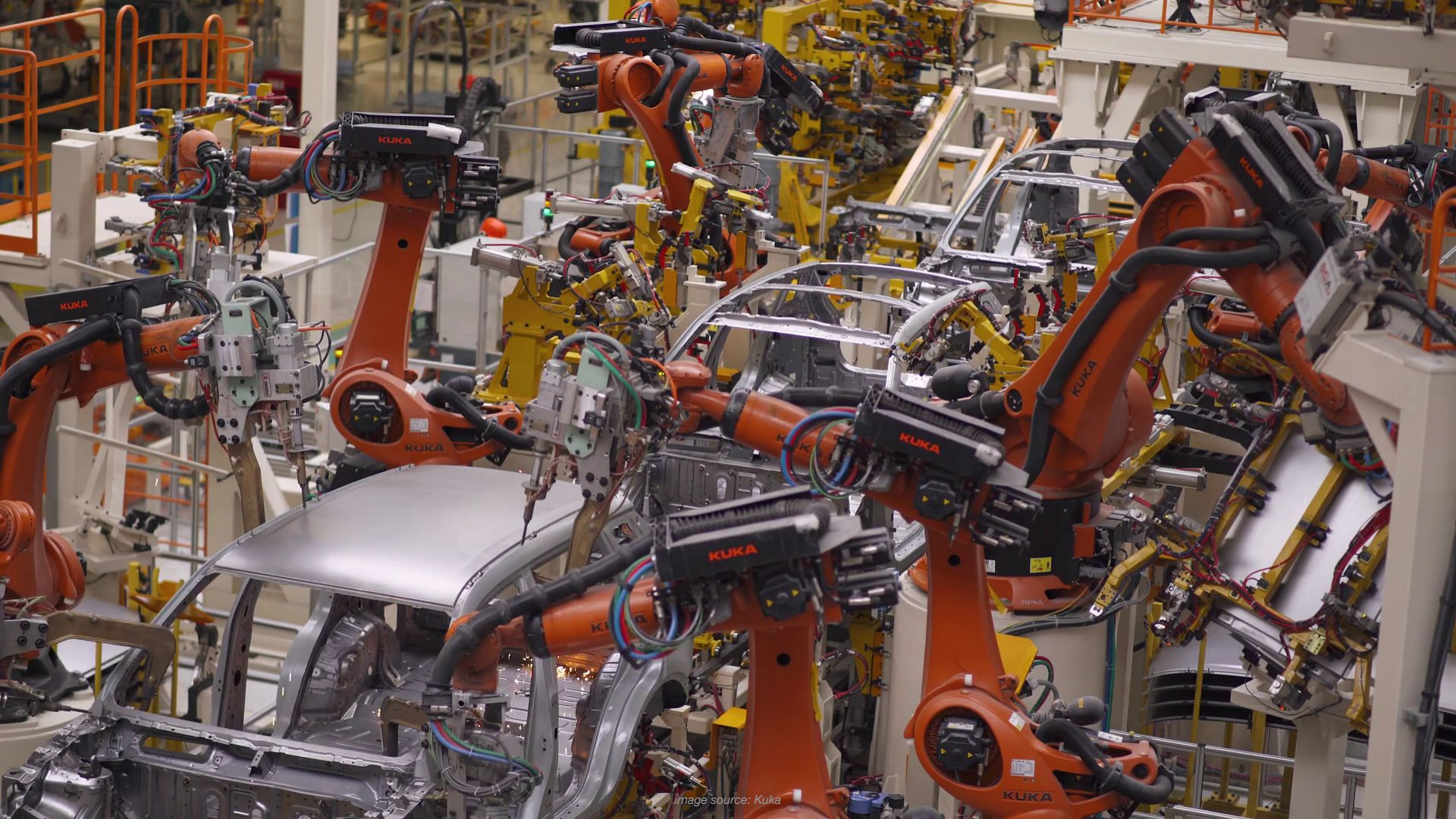


Image source: Kuka

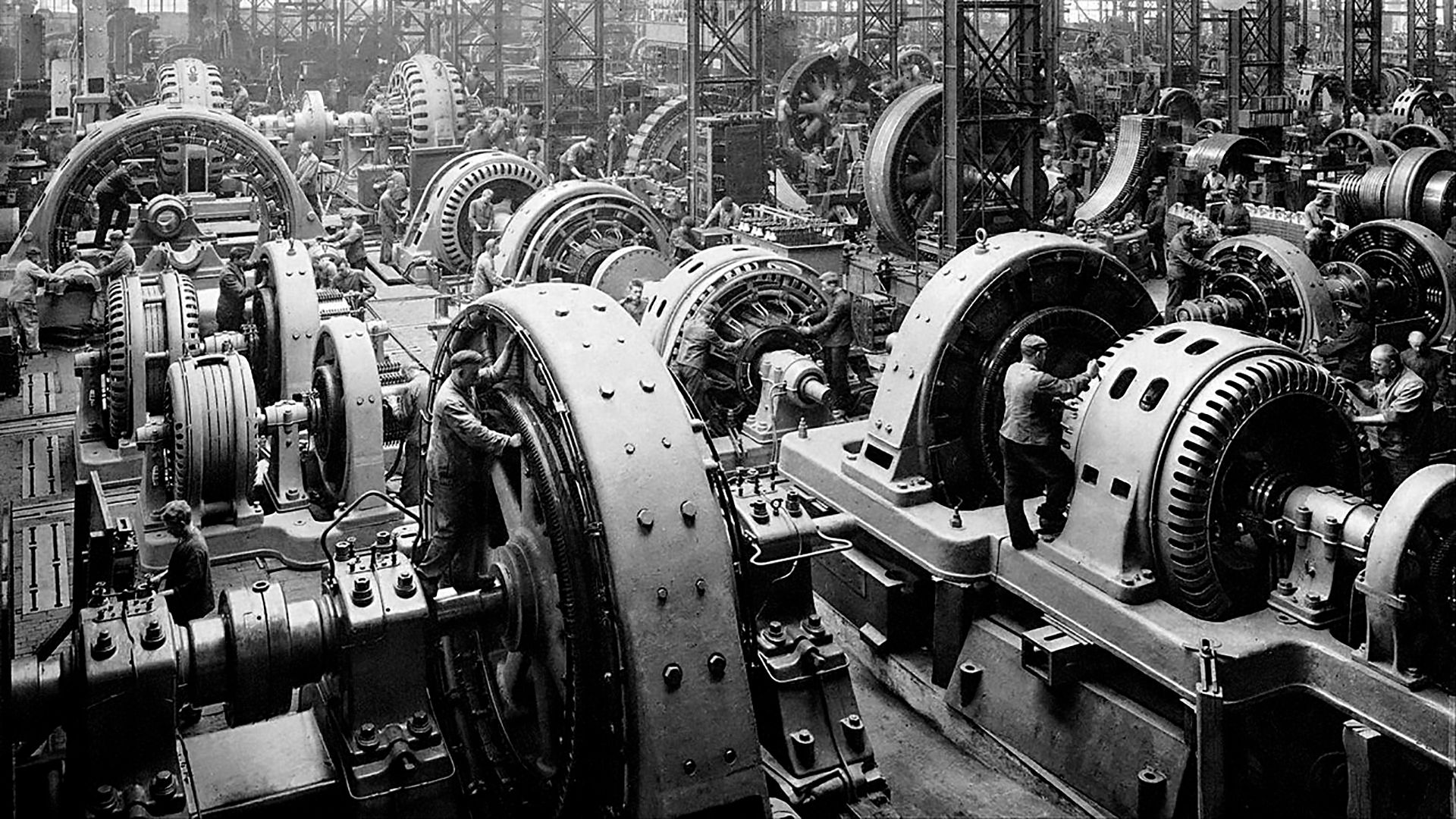
Reasoning

A photograph of an industrial manufacturing environment, likely an automotive assembly line. The scene is filled with numerous orange KUKA robotic arms, each equipped with various tools and sensors. These arms are positioned around several car chassis, which are in various stages of assembly. The background shows a complex network of metal structures, pipes, and other machinery, all under bright industrial lighting. The overall atmosphere is one of a busy, automated production facility.

image source: Kuka



TECHNOLOGY AND SOCIETY





DCM3167

N414FW



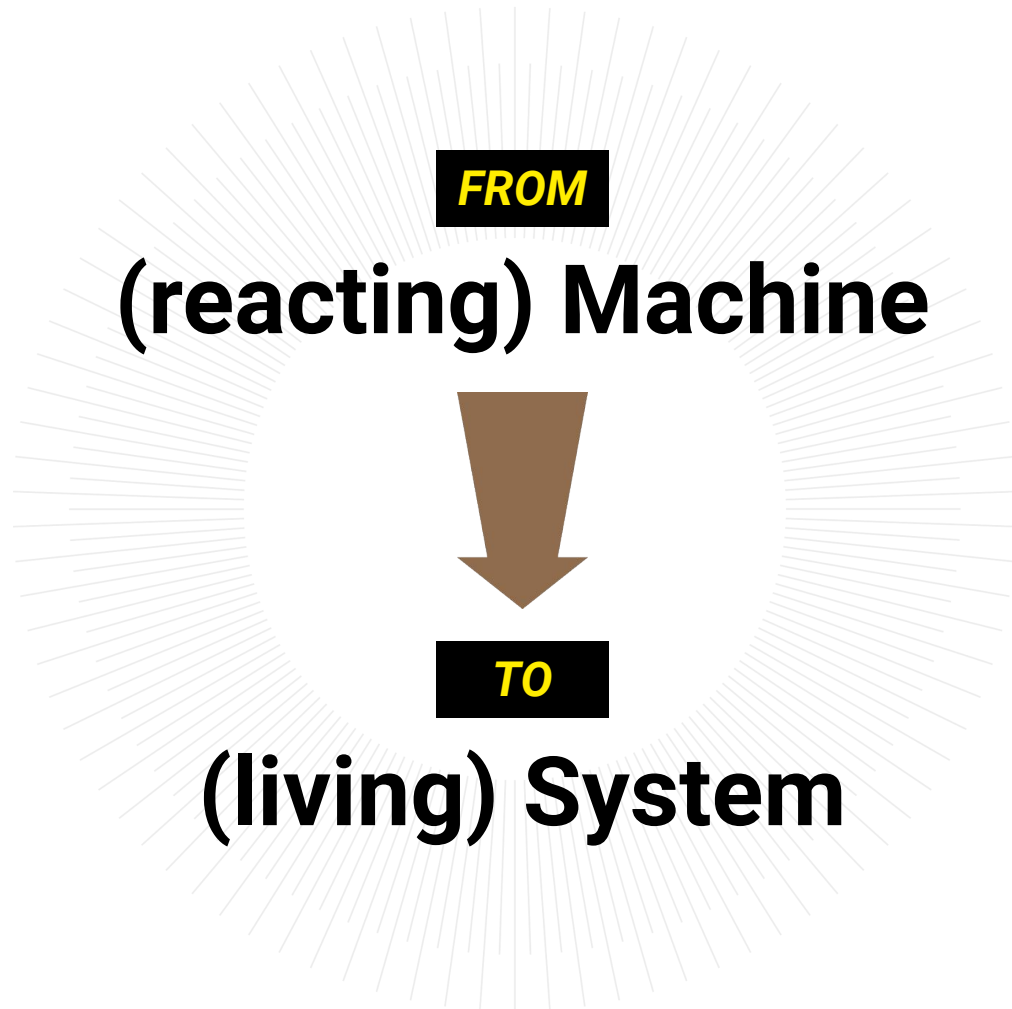
STANDARD PANEL
MODE LIST

MODE	MODE	MODE	MODE
MODE 1	MODE 2	MODE 3	MODE 4
MODE 5	MODE 6	MODE 7	MODE 8
MODE 9	MODE 10	MODE 11	MODE 12
MODE 13	MODE 14	MODE 15	MODE 16
MODE 17	MODE 18	MODE 19	MODE 20



- GEAR
CONTROL
- 1. PULL & TURN
 - 2. TURN HANDLE
 - 3. PULL & TURN
 - 4. PULL & TURN







AUTOMATION

DHARMA INITIATIVE FOOD &
BEVERAGES



Procedural Design





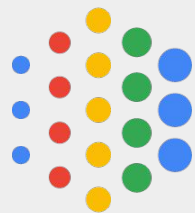
image source: Book of the Dead, Unity



Procedural Generation

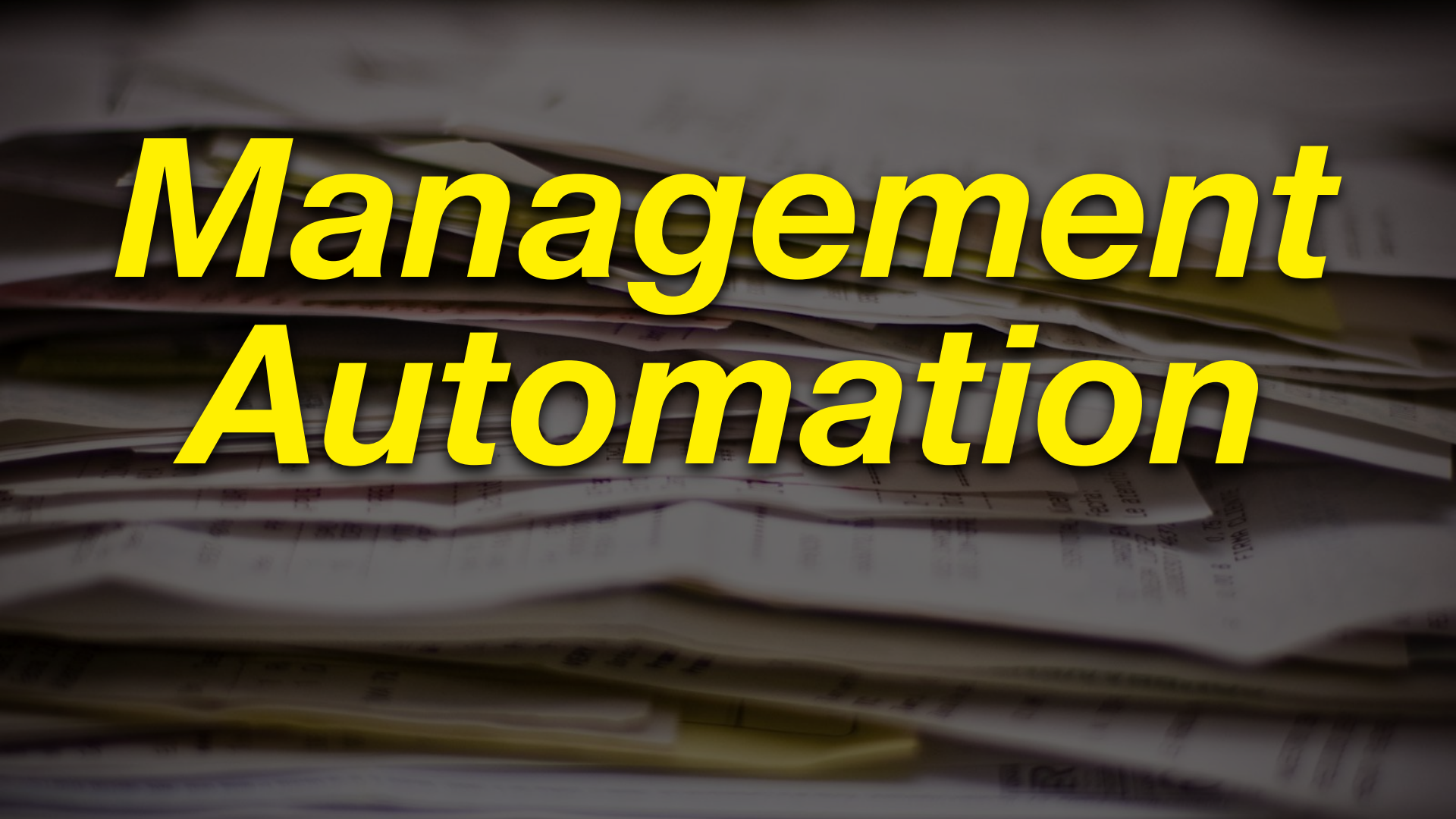






Google AI





Management Automation



HUMAN MACHINE INTERACTION

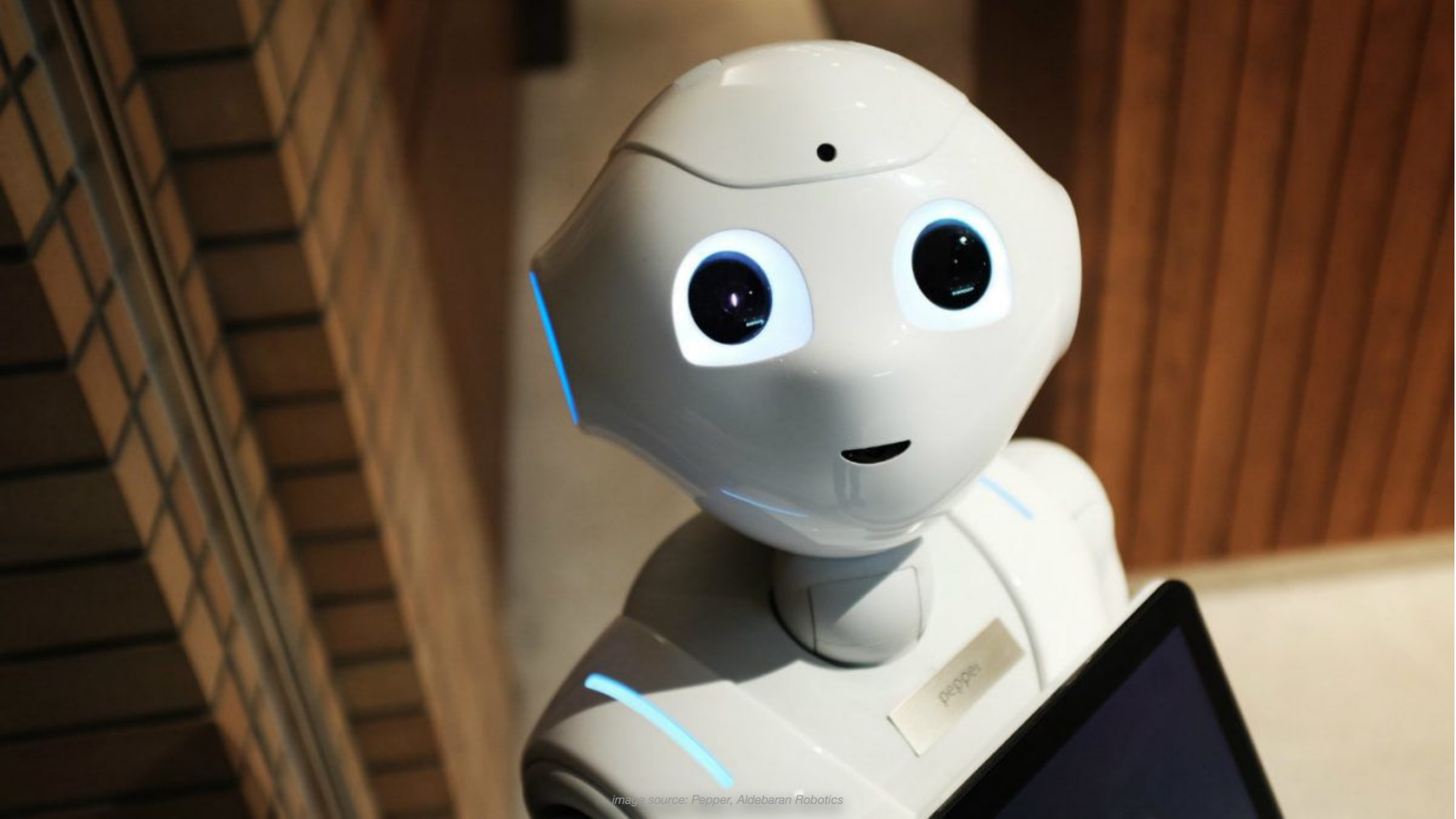


image source: Pepper, Aldebaran Robotics



image source: Atlas, Boston Dynamics



Would you get out of my way, please?



Image source: Spot, Boston Dynamics

A yellow quadruped robot, specifically a Spot by Boston Dynamics, is shown in a dark, industrial environment. The robot is positioned in the center-left of the frame, facing right. It has four black legs and a yellow body. The background is dimly lit, showing structural elements of a building. Overlaid on the image is the text "Autonomous Agents" in a large, bold, yellow, italicized font.

Autonomous Agents

image source: Spot, Boston Dynamics

A yellow Boston Dynamics Spot autonomous robot is shown in a warehouse environment. The robot is a small, four-legged machine with a camera and sensors on its head. It is standing on a concrete floor, and the background is a blurred industrial space with various equipment and structures.

Autonomous Agents

Get yours at www.bostondynamics.com/spot
For just \$74,500

image source: Spot, Boston Dynamics

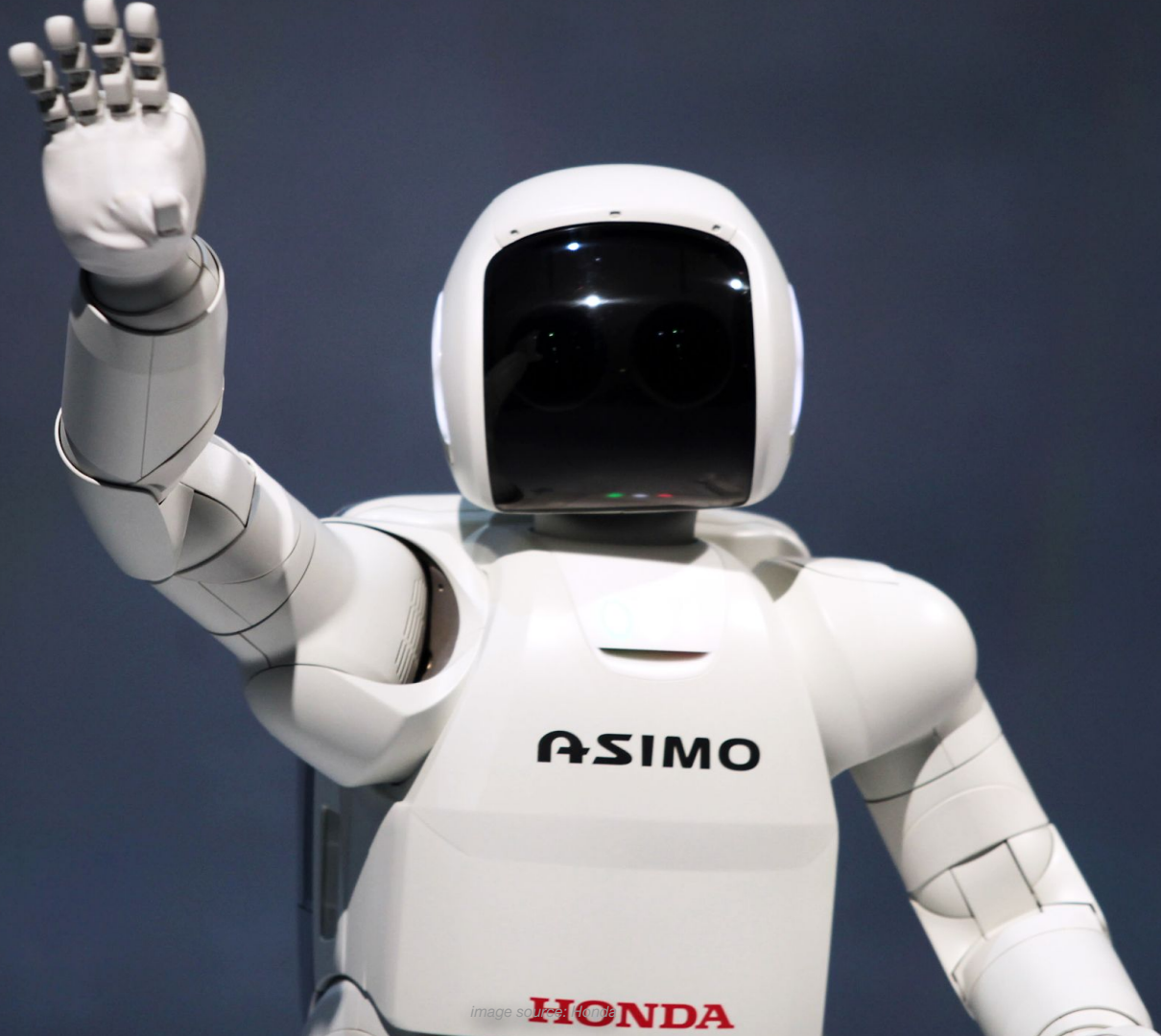


image source: [Honda](#)



SOCIAL ROBOTICS





Honda Haru

***We have an ongoing research collaboration
and they will present on the new GlobalDay in January.***

Ask me if you want to know more! :)



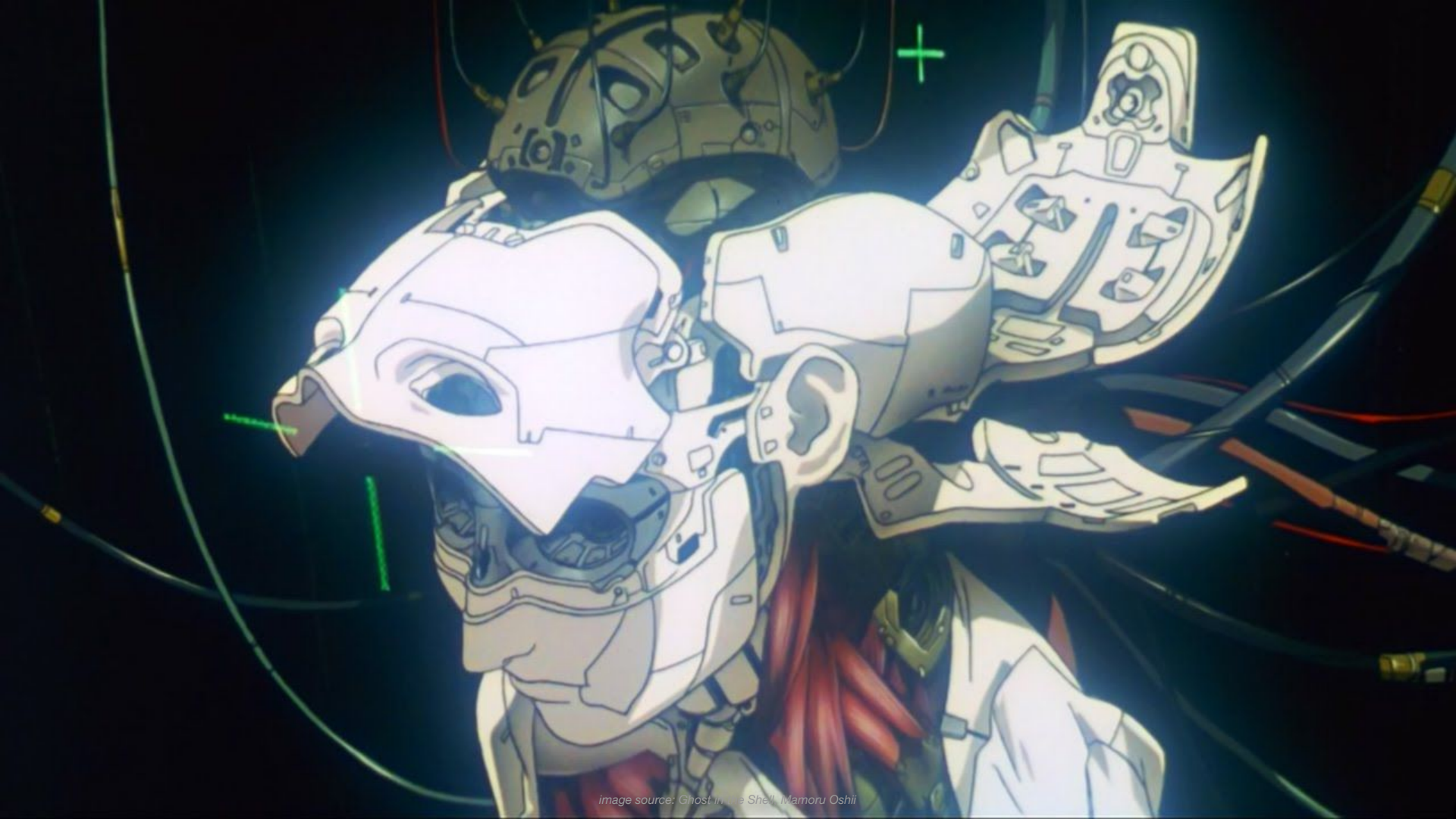
AI AND SOCIETY



image source: Iron Man, Marvel Studios

Today:

Bidirectional Communication





Tomorrow:

Als as customers



Image source: Battlestar Galactica, Universal



***They are
here to stay***



ККТНХВҮЕ!